

**getting
it right**
for every child

GIRFEC

Friday 11 November 2022

Ett varmt välkomnande
från Skottland!

Improving Outcomes
for Children and
Young People in Scotland

Our Ambition: To make Scotland the best place in the world to grow up

'We grow up loved, safe and respected so that we realise our full potential'

- **Children's rights at the centre:** Incorporation of UNCRC to the maximum extent possible as soon as practicable
- **Tackling Child Poverty:** increasing family incomes, reducing costs and mitigating the impacts of poverty, investment in Scottish Child Payment; expansion in childcare; Scottish Attainment Challenge; provision of free school meals and increased clothing grant; Parental employability support fund
- **High quality universal and targeted services:** Investment in frontline community-based child health services, including pre-birth; support to overcome barriers to learning; trauma-informed and nurturing workforce
- **Support Whole Family Wellbeing:** shifting investment to prevention; holistic support services; investment in mental health and wellbeing via schools, local support, CAMHS
- **Keeping the Promise:** whole family support; redesign of the children's hearings system; system change to support children, young people and families at earlier stages to minimise need for more intensive supports
- **Children's Services Planning Partnerships:** improvements in commissioning, procurement, design and scaling of services to support families
- **GIRFEC:** consistent and holistic; rights-based; child and family-centred; early, co-ordinated support

The Scottish National Performance Framework

- “We grow up loved, safe and respected so that we realise our full potential”



National practice model

Observing & recording
Events / observations /
other information

Gathering information &
analysis

Planning action & review



Resilience matrix used when
required for more complex situations

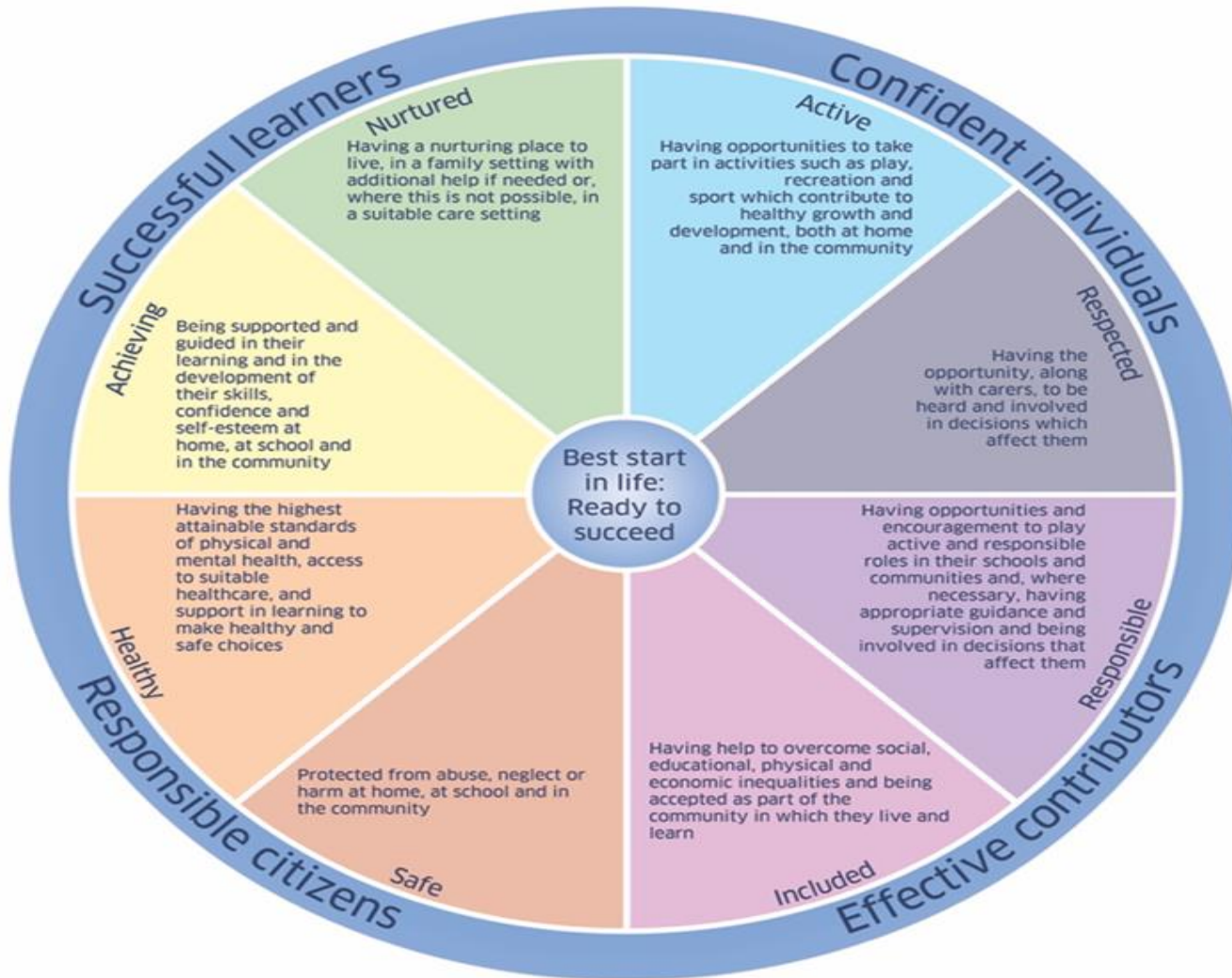


Well-being
Concerns

Assessment
Appropriate, proportionate, timely

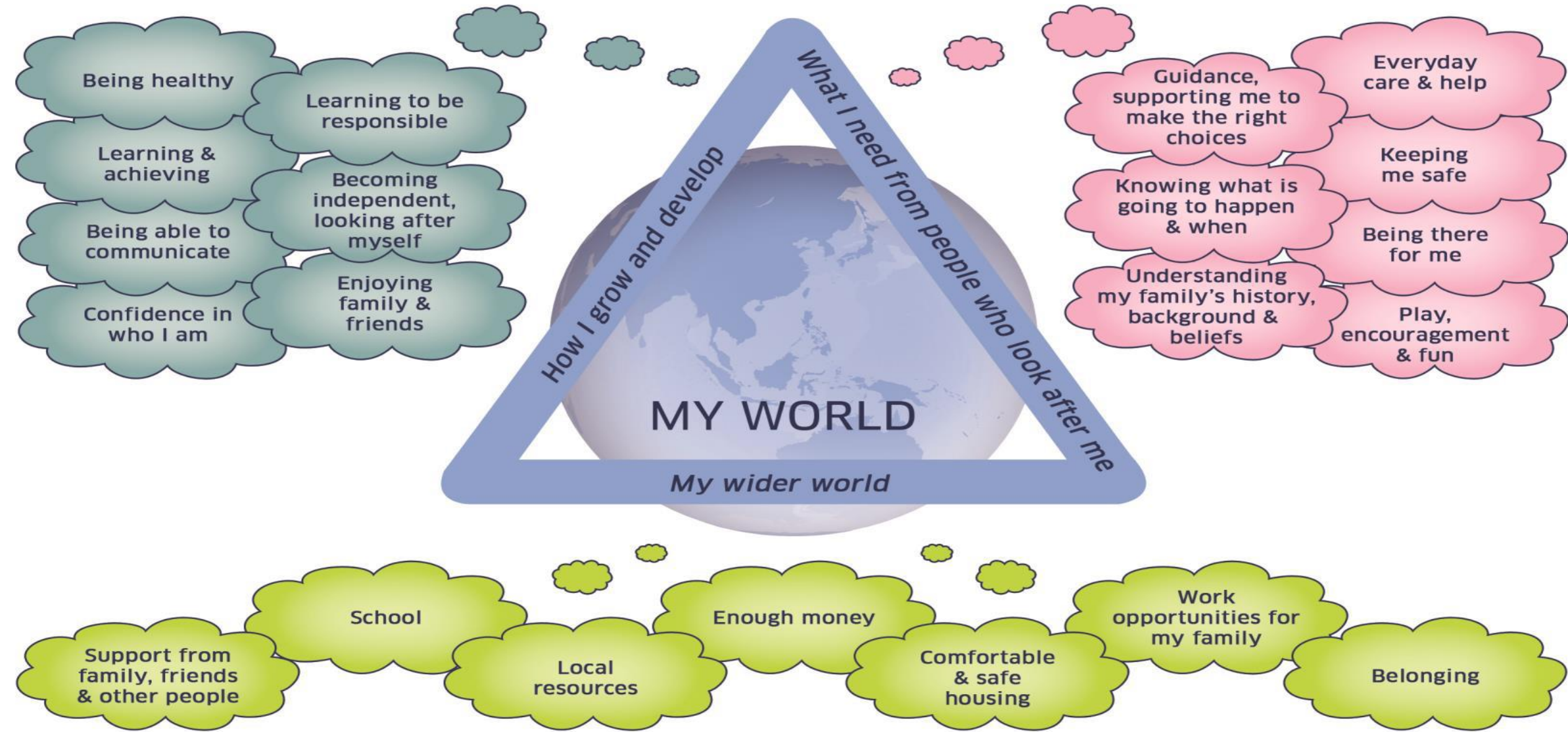
Well-being
Desired outcomes

Wellbeing Indicators



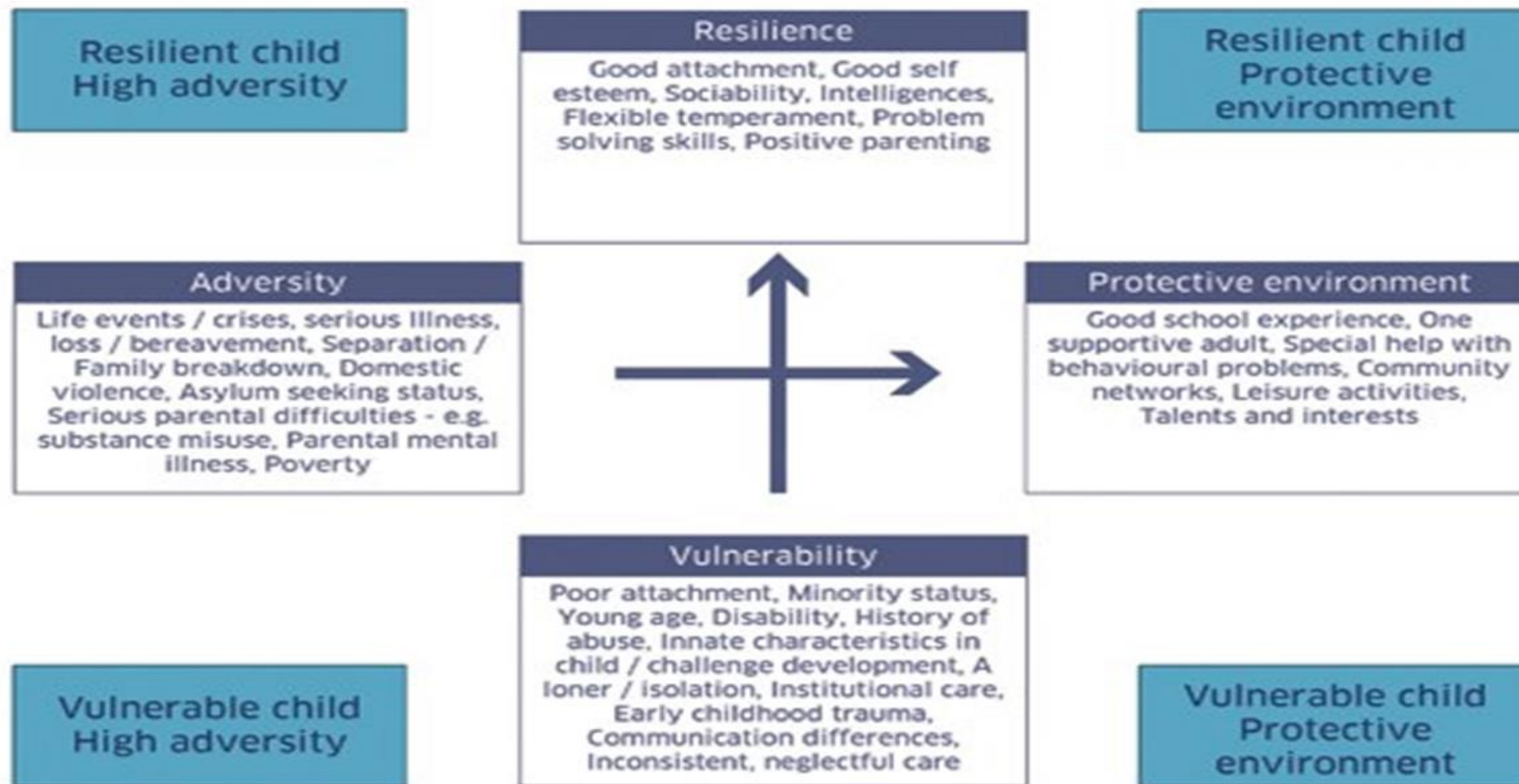
SAFE
HEALTHY
ACHIEVING
NURTURED
ACTIVE
RESPECTED
RESPONSIBLE
INCLUDED

My world triangle



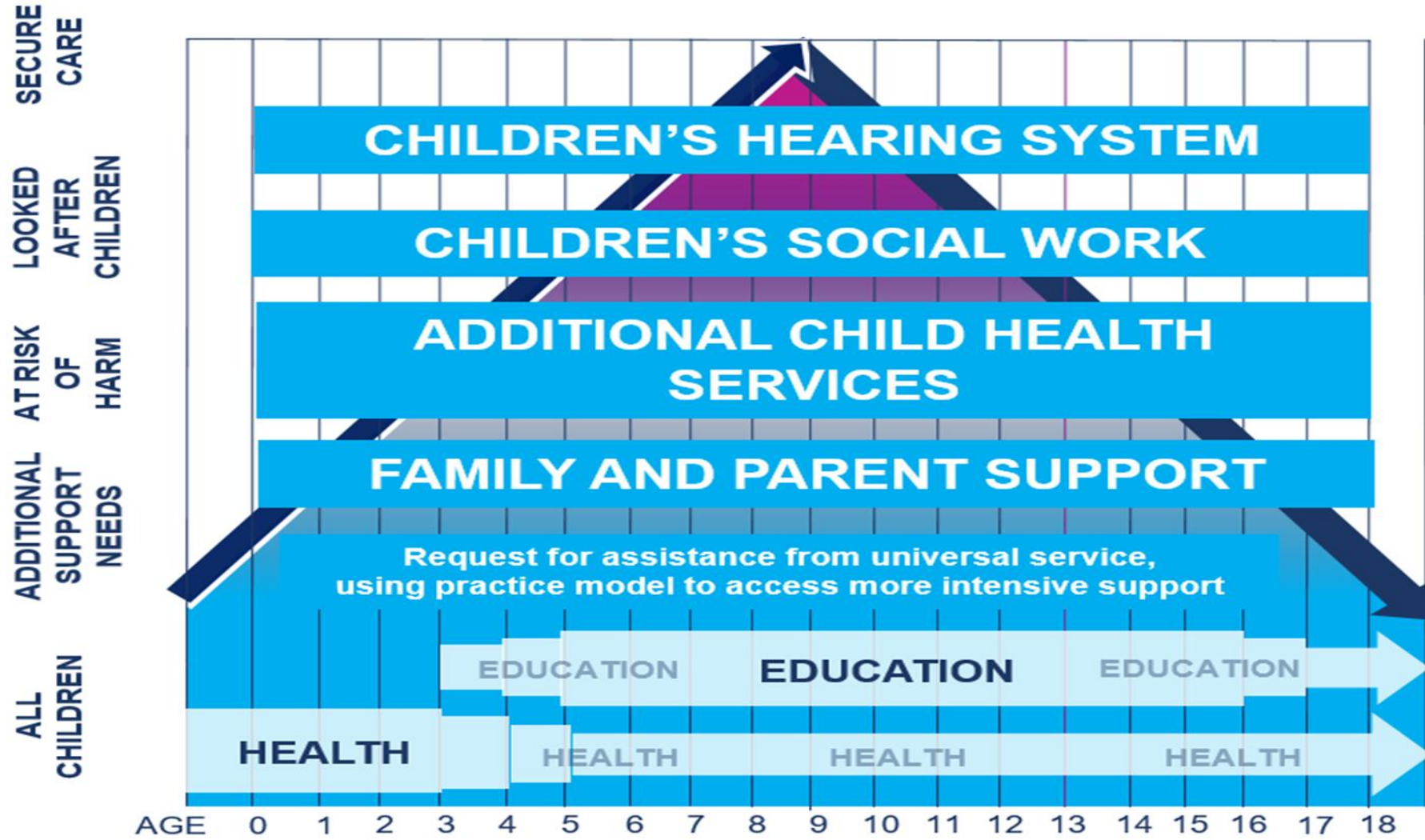
The whole child or young person: Physical, Social, Educational, Emotional, Spiritual & Psychological development

Resilience / vulnerability matrix



Variables:
Timing and age, Multiple adversities, Cumulative protectors, Pathways, Turning points, A sense of belonging

Interventions
Strengthen protective factors and resilience, Reduce problems and address vulnerability, Achieve initial small improvements



Values & Principles

Significant changes are highlighted below:

- Placing the child, young person and family at the centre, and promoting **choice**, with **full participation** of children, young people and families in decision-making;
- **Working in partnership with families to enable a rights-respecting, strengths-based, inclusive approach;**
- Understanding wellbeing as **holistic and interconnected**, with a child or young person's developmental experiences understood within the wider context and influences of family, **community and society;**
- **Valuing diversity and ensuring non-discrimination;**
- **Equitably tackling multiple and intersecting forms of inequality;**
- Shifting **resources** and support towards providing an early offer of support to **improve outcomes** for children, young people and families; and,
- Joint working in a culture of co-operation and communication between **practitioners and services**, both locally and **nationally** across Scotland.

GIRFEC Principles improve outcomes for Children and Young People

How do we know?

EVIDENCE!

- Feedback from Joint Inspection reports of services for Children and Young People in need of care and protection

What did we learn from Evidence?

- Children and young people were benefitting from positive, caring relationships with key staff which were informed by trauma informed practice principles. These relationships were supported by the GIRFEC approach. This gave staff a shared language and better opportunities to work effectively together with children and their families to address need and risk
- Staff shared a common understanding of the getting it right for every child (GIRFEC) principles and national practice model. This had helped to promote a strong culture of collaborative working and staff responding in an effective and timely way to protect children at risk of harm. A range of early identification and intervention approaches and services were being used successfully to prevent risk from escalating.
- High percentage of staff viewed GIRFEC principles having made it easier to access assistance at an early stage
- Common understanding of the wellbeing indicators and National Practice Model was well embedded across agencies
- Communication and information sharing was enhanced across all services
- GIRFEC promoted the understanding of children's needs for parents and carers

Findings



- Many services were providing **help and support at an earlier stage**
- **Integrated structures, joined up processes and common terminology**, resulting in children and young people's wellbeing needs being identified and addressed at an earlier stage
- Many staff told us how GIRFEC had helped to **improve working relationships** at the front line

**Tack for att
du lyssnar!**